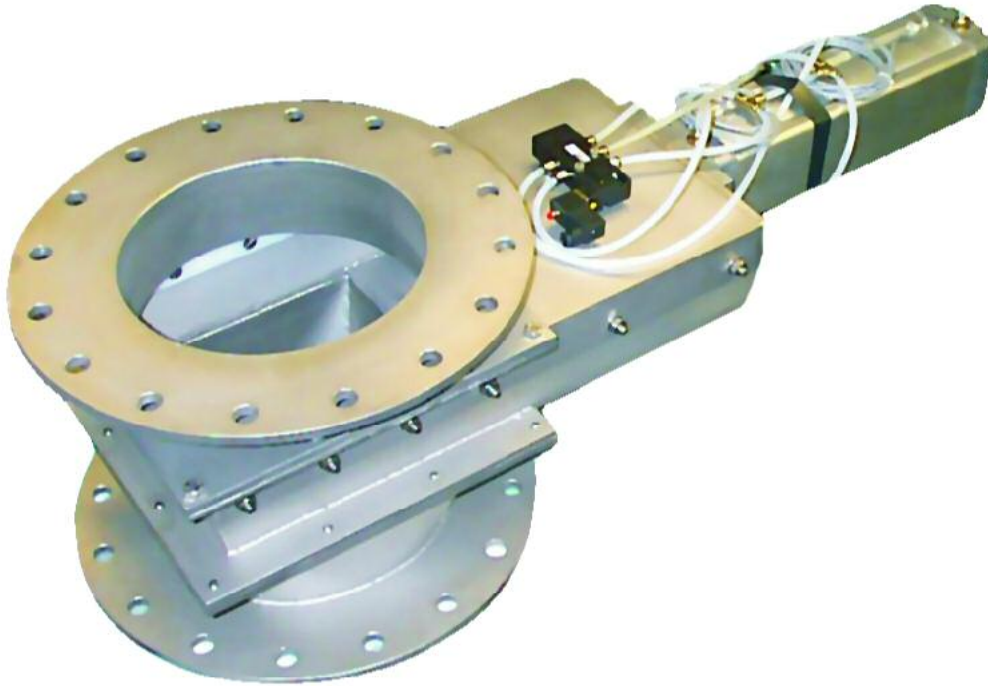




Slide Valves Type TESV



Applications

Handling abrasive products
Controlling hopper discharge
When access for maintenance is difficult

Standard features

No stuffing box plate seal to maintain
Self- adjusting slide plate
Positive cam-action on closing
Totally dust tight to atmosphere
Robust cast body (fabricated on 350 and larger)
Machined metal to metal seat
Full bore throughout
Pneumatically operated
Exhaust piped to the chest for cleaning
Manually operated by handwheel and non-rising stem
Round or square inlet
Square outlet

Optional features

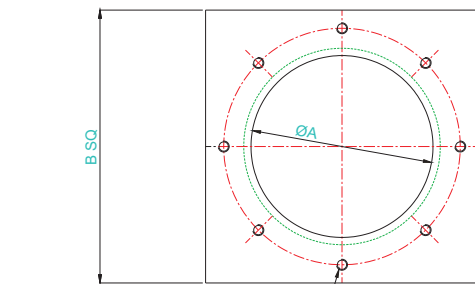
Round outlet transition adapter
Dribble feed version
Alternative materials (stainless, titanium, Hastelloy etc)
Alternative actuators (electric, hydraulic)
Abrasion resistant liners
PTFE internal coating
Inflatable plate seat

Midland Industrial Designers Limited

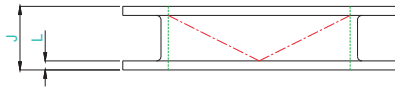
Common Lane, Watnall, Nottingham, England NG16 1HD
T: (+44)(0)115 9382154 F: (+44)(0)115 9386315
E: enquiry@mid.uk.com W: www.mid.uk.com
Manufacturers of powder handling equipment since 1959



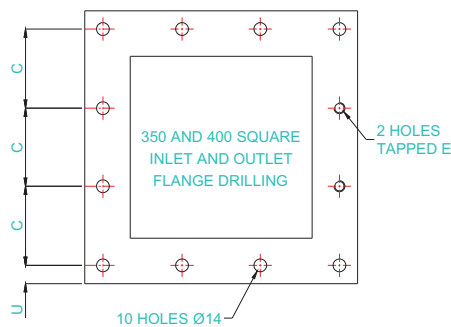
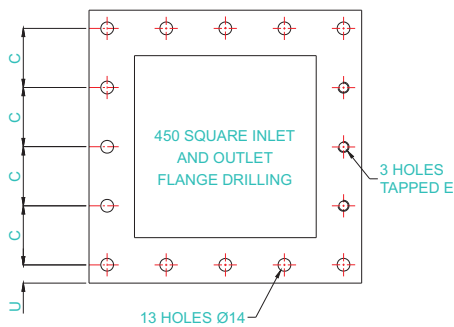
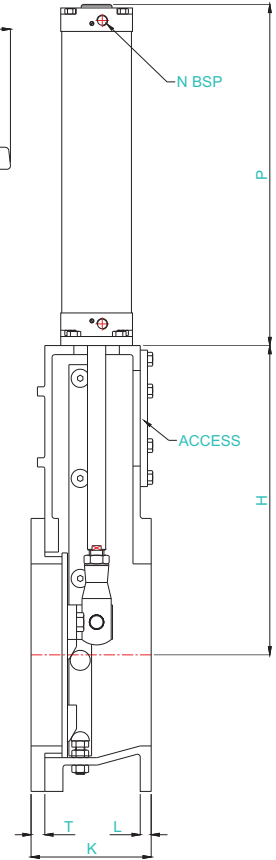
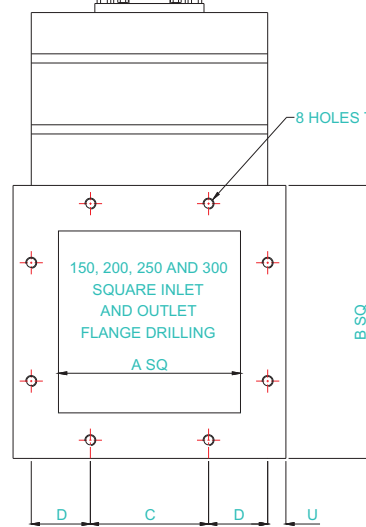
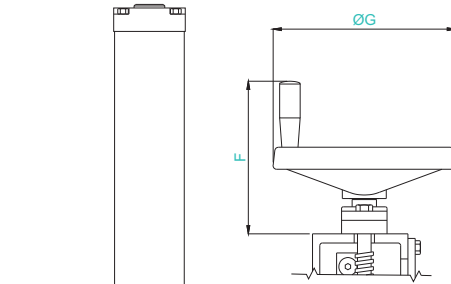
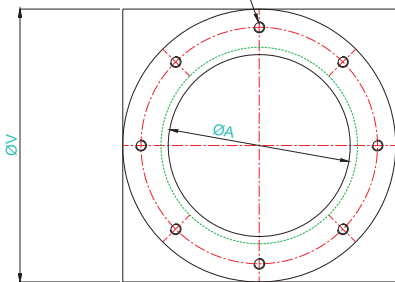
Slide Valves Type TESV



8 HOLES TAPPED E ON M PCD ON CL
150, 200, 250 AND 300 ONLY
R STUDS E THREAD PROJECTING S OFF
CENTRE ON M PCD FOR 350 AND ABOVE



8 HOLES TAPPED E ON M PCD ON CL
150, 200, 250 AND 300 ONLY
R HOLES TAPPED E OFF CENTRE
ON M PCD FOR 350 AND ABOVE



Size	A	B	C	D	E	F	G	H	J	K	L	M	N	P	R	S	T	U	V
150	250	120	45	M10	185	200	290	65	120	12	210	1/4"	305	8	-	15	20	250	
200	300	130	65	M12	185	200	340	70	132	12	260	3/8"	375	8	-	15	20	300	
250	350	140	85	M12	212	355	440	75	145	12	310	3/8"	405	8	-	15	20	350	
300	400	150	105	M12	212	355	495	80	145	12	360	3/8"	475	8	-	15	20	400	
350	520	153	-	M12	212	355	650	85	140	8	445	1/2"	530	12	25	10	30.5	490	
400	572	170	-	M12	212	355	700	90	140	8	495	1/2"	580	16	25	10	31	540	
450	622	140	-	M12	212	355	750	95	140	8	550	1/2"	610	16	30	10	31	595	