



# Rotary Valves

## Type SR



### Applications

- Feeding and metering powders and granules
- Providing an airlock between a silo and a blowing line
- Especially suitable for poor-flowing products
- Space saving round in/square out design (reversible)

### Standard features

Cast iron body

Fabricated carbon steel rotor

Outrigged sealed for life bearings

Double lip type shaft seals

Electrically driven via a guarded chain drive from an IP55 gearmotor

Round inlet, square outlet (may be reversed)

### Optional features

Range of body and rotor materials (aluminum, stainless steel . . .)

Various rotor tip styles (friction relieved, polyurethane, adjustable high carbon . . .)

Stuffing box shaft seals

Mechanical, virtually maintenance free shaft seals

Air purged seals

Quick release rotor for frequent cleaning operations

Alternative drives

High temperature version

Alternative flange drilling

**For aggressive applications we recommend the TWA extreme duty rotary valve**

### Midland Industrial Designers Limited

Common Lane • Watnall • Nottingham • England • NG16 1HD

T: (+44)(0)115 9382154 • F: (+44)(0)115 9386315

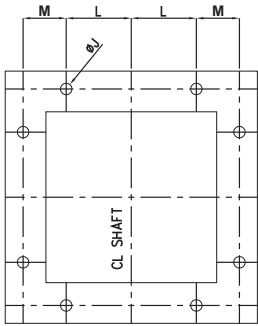
E: enquiry@mid.uk.com • W: www.mid.uk.com

Manufacturers of powder handling equipment since 1959

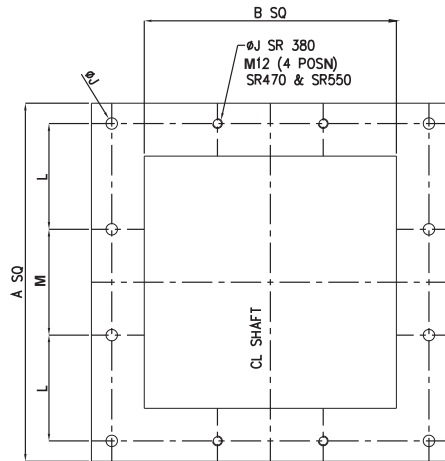


# Rotary Valves

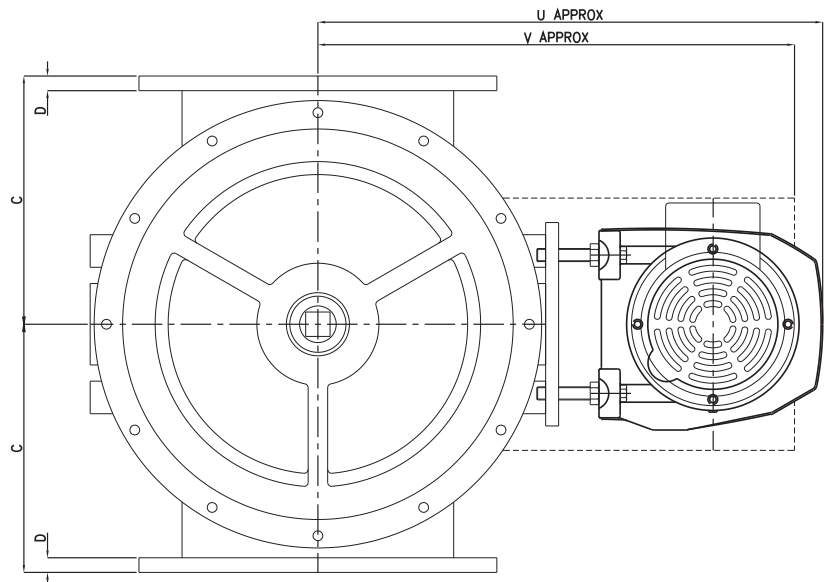
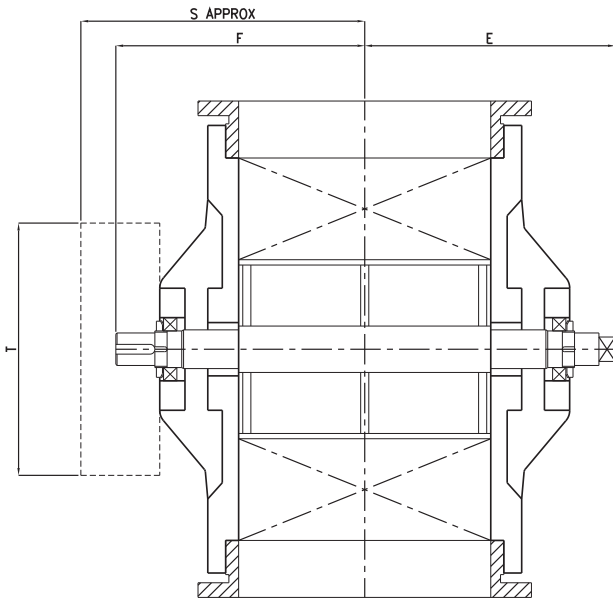
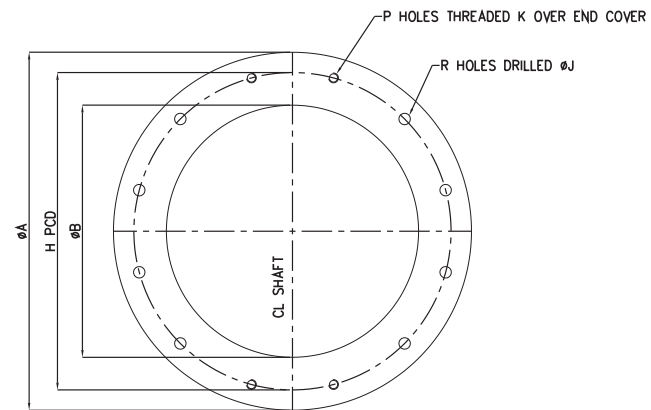
## Type SR



SR 190, 250, 320



SR 380, 470, 550



TYPE	A	B	C	D	E	F	G	H	J	K	L	M	N	P	R	S	T	U	V	Capacity	
																				ft <sup>3</sup> /rev	l/rev
190	200	130	130	10	185	215	22	174	12	M10	57	30	6x6	2	4	255	200	345	315	0.1	2.8
250	260	165	165	10	205	265	30	224	14	M12	65	47	8x7	2	4	305	210	415	385	0.23	6.6
320	310	205	205	12	230	265	35	266	14	M12	80	53	10x7	2	6	305	270	515	485	0.48	13.5
380	360	255	255	15	260	340	35	310	14	M12	100	110	10x7	4	8	380	310	560	530	0.78	22.2
470	440	305	305	18	258	306	40	390	14	M12	130	130	12x7	4	8	350	310	620	585	1.5	42.5
550	490	345	345	20	332	380	40	440	14	M12	145	150	12x7	4	8	367	310	660	625	2.3	65

Please note the type refers to the rotor diameter, not the inlet  
Dimensions may vary depending on the options selected