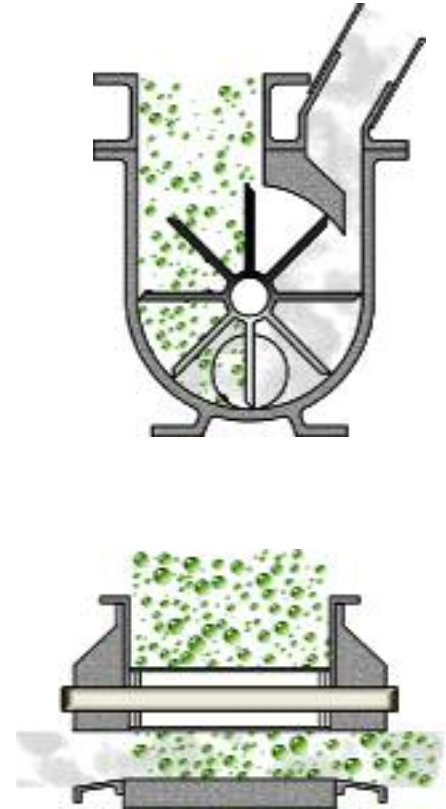
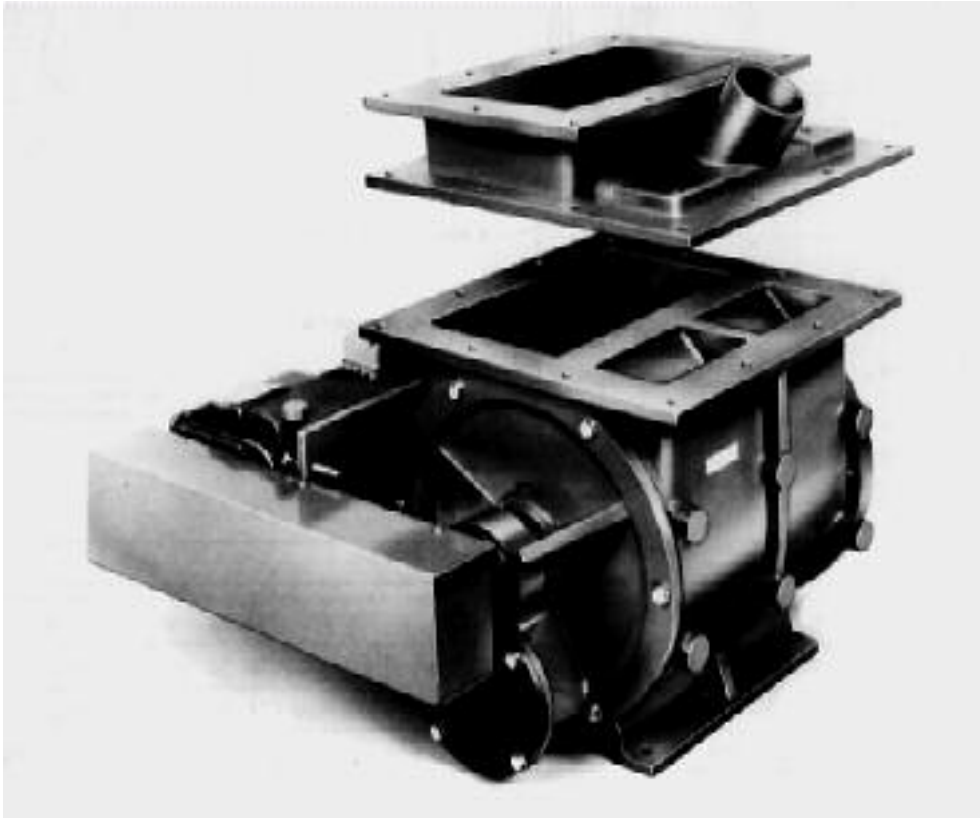




Rotary Valves Type RBS



Operation

The product enters the valve and falls into the moving rotor pockets. The rotor carries the product round the valve directly into the air stream which sweeps the material out of each pocket and along the conveying line. The 1 blade seal between the vent and the product inlet helps prevent air leakage into the hopper.

Applications

- Venting conveying air to prevent product bridging
- Preventing conveying air discharge into the operator's face when emptying sacks
- Feeding powders and granules directly into a pneumatic conveying line

Standard features

Electrically driven via a guarded chain drive from an IP55 gearmotor
Double lip type shaft seals
Outrigged heavy duty taper roller bearings
Fabricated friction relieved carbon steel rotor
With or without integral vent arrangement to seal between the vent and the product inlet
Cast iron body

Optional features

High temperature version
Alternative drives
Air purged seals (see shaft seal data sheet)
Mechanical shaft seals (see shaft seal data sheet)
Stuffing box shaft seals (see shaft seal data sheet)
Various rotor tip styles (polyurethane, adjustable high carbon . . .)
Range of body and rotor materials (aluminium, stainless steel . . .)
Cast inlet vent adapter to route vented air away from the valve

For exceptionally aggressive applications we recommend the TWA extreme duty rotary valve

Midland Industrial Designers Limited

Common Lane • Watnall • Nottingham • England • NG16 1HD

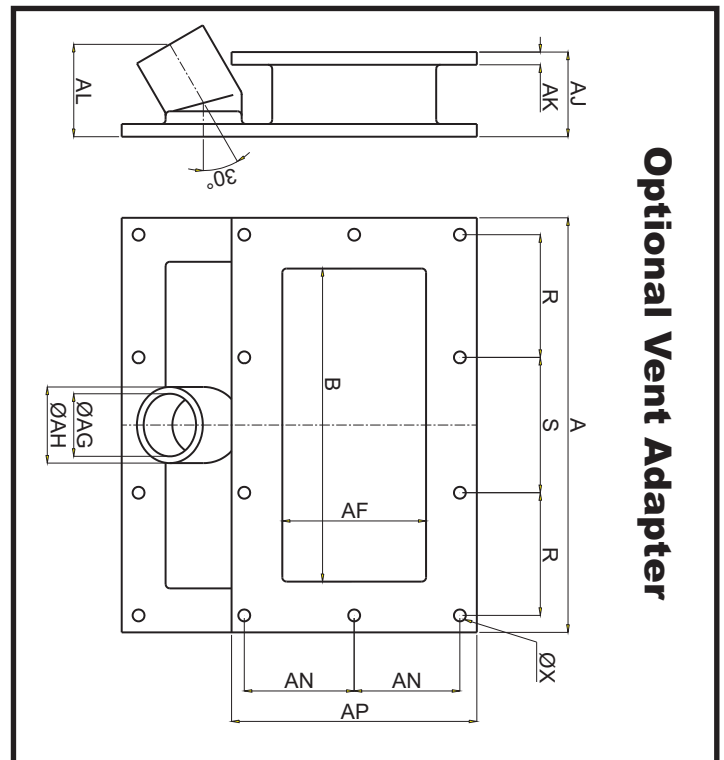
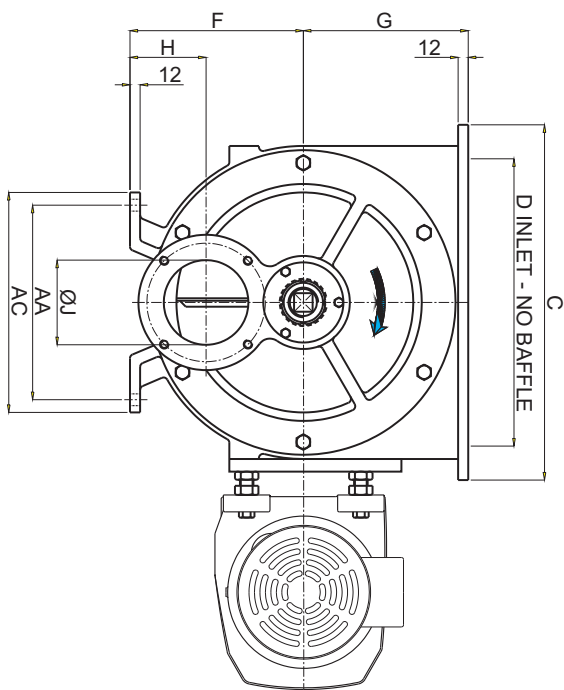
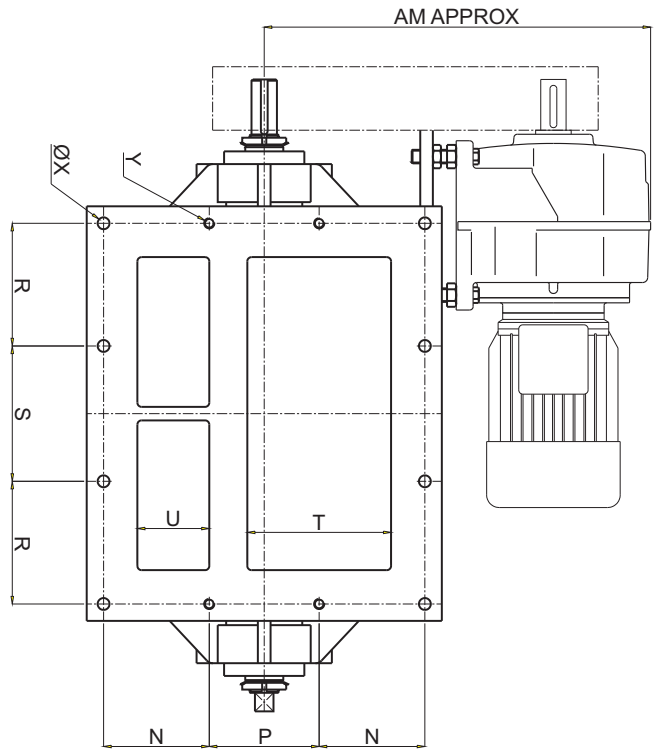
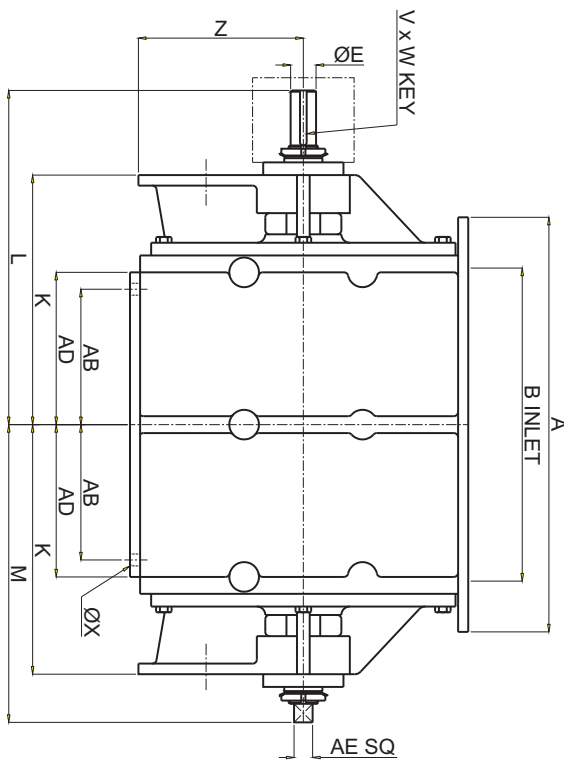
Tel: (+44)(0)115 9382154 • Fax: (+44)(0)115 9386315

Manufacturers of powder handling equipment since 1962



Rotary Valves Type RBS

Size	A	B	C	D	E	F	G	H	J	K	L	M	N	P	R	S	T	U	V	W	X	Y	Z	AA	AB	AC	AD	AE	AF	AG	AH	AJ	AK	AL	AM	AN	AP	I/rev	t ² /rev
02	310	210	320	220	30	180	152	60	75	227	267	306	97	96	92	96	120	50	8	6	12	M10	175	180	85	210	100	22	120	48	63	80	12	90	267	95	220	5.7	0.2
04	390	280	360	250	30	180	170	80	75	250	285	345	110	110	120	120	140	70	8	6	12	M10	168	200	120	230	135	22	140	60	76	90	12	95	386	110	250	11.4	0.4
08	490	370	420	300	30	205	195	90	100	295	330	395	125	130	145	160	170	85	8	6	14	M10	195	230	160	260	180	22	170	74	90	100	15	123	457	125	290	22.8	0.8
12	500	380	470	350	40	245	225	105	125	305	340	420	145	140	150	160	200	100	12	8	14	M12	235	260	165	300	185	30	200	84	100	110	15	135	600	140	320	34.3	1.2



Optional Vent Adapter

Midland Industrial Designers Limited
 Common Lane • Watnall • Nottingham • England • NG16 1HD
 Tel: (+44)(0)115 9382154 • Fax: (+44)(0)115 9386315
 Manufacturers of powder handling equipment since 1962